

DUNGEON DOWNLOADS

www.freelunchcomics.com

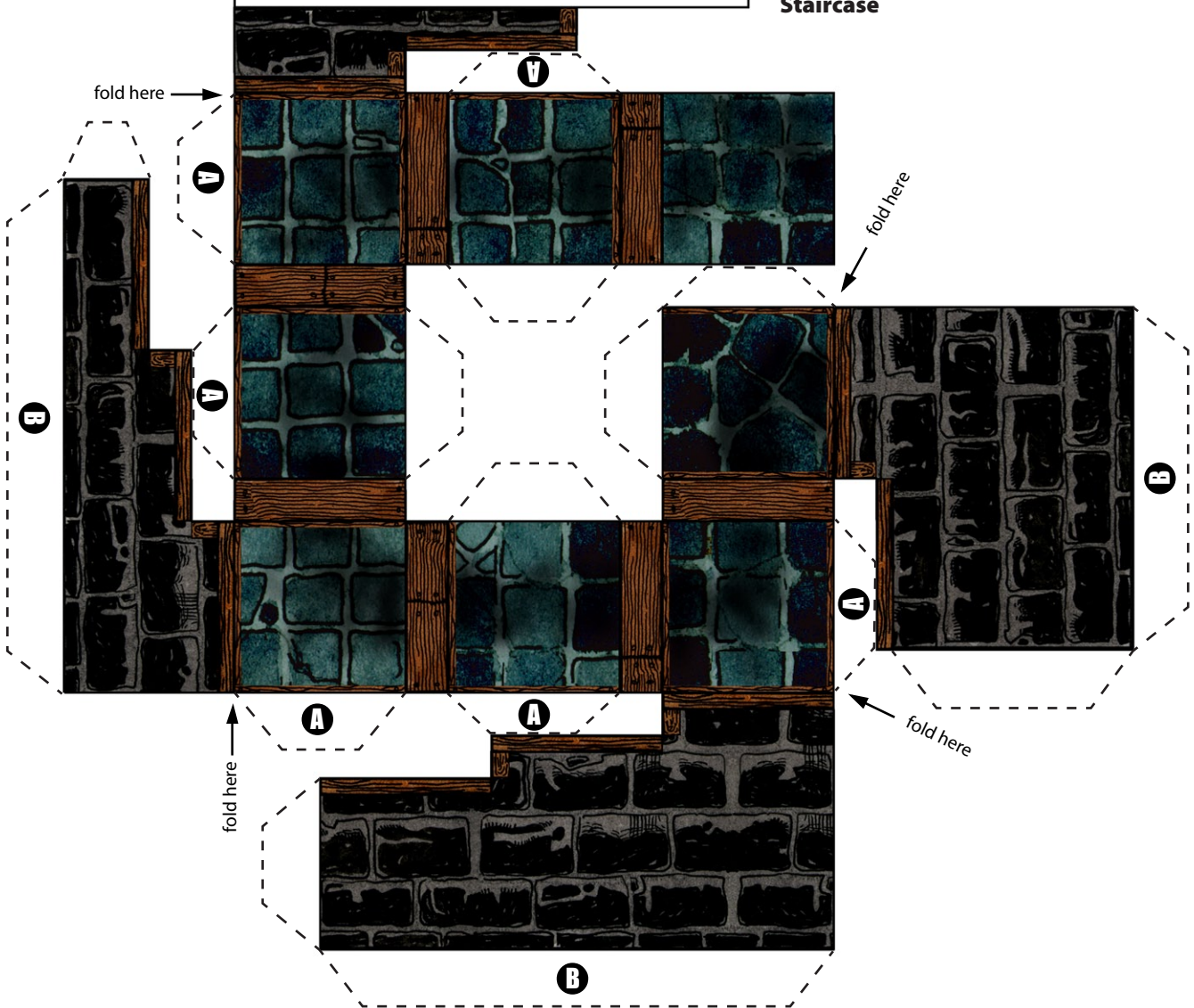
© Matt Ryan & Chris Meyer

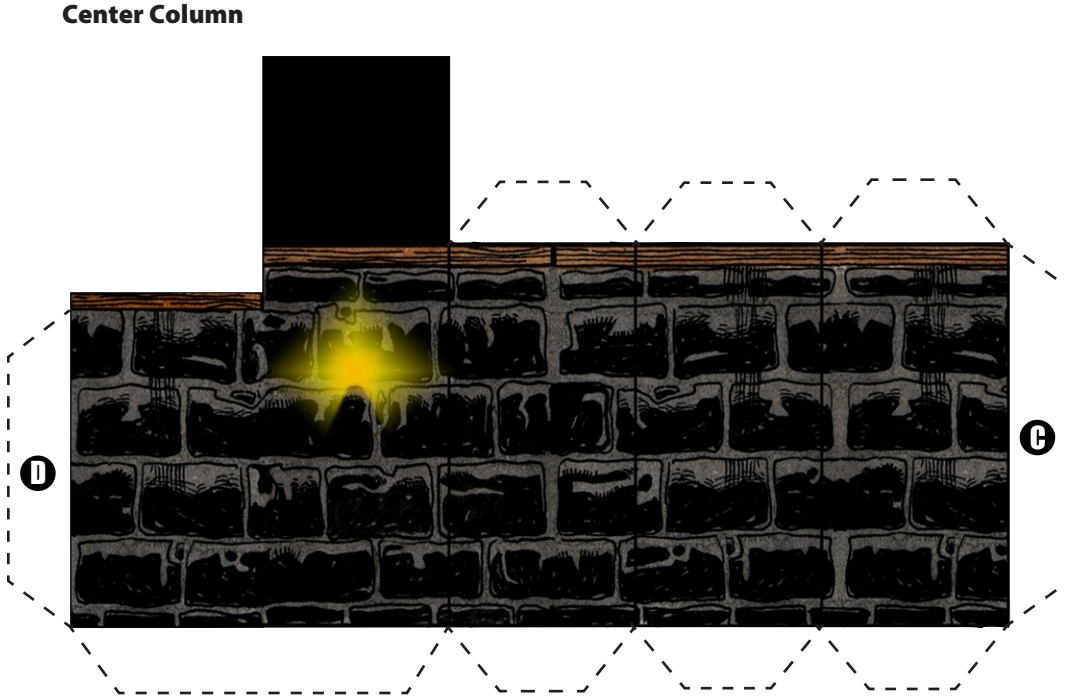
Spiral Staircase

version 1, no. 1

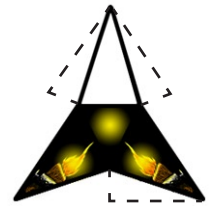
Glue first step
to opposite
side here.

Staircase





Torch



Directions

For Stairs:

1. Cut out structure including dashed lines.
2. Score along the edge of each wooden board in between each stone step.
3. Score and fold down each step.
4. Fold the white base over and glue the first step to the corner.
5. Fold the wooden board into a "Z" shape to form the next step.
6. Travel up each step gluing tabs (A) to the stair sides.
7. Glue tabs (B) to white base.

For Center Column

1. Cut out structure including dashed lines.
2. Score and fold center column leaving shorter wall section extended.
3. Fold into rectangle gluing tab (C) to side.
4. Glue down black top.
5. Glue column into center of staircase. Tab (D) is glued to staircase side.

For Torches:

1. Cut out torch including dashed lines.
2. Score and fold into upside-down pyramid, gluing tabs.
3. Glue each torch just below torch highlight on center column.

• Refer to picture on web site if more help is needed.